

# *The White House*

*Chaweng Beach – Koh Samui*

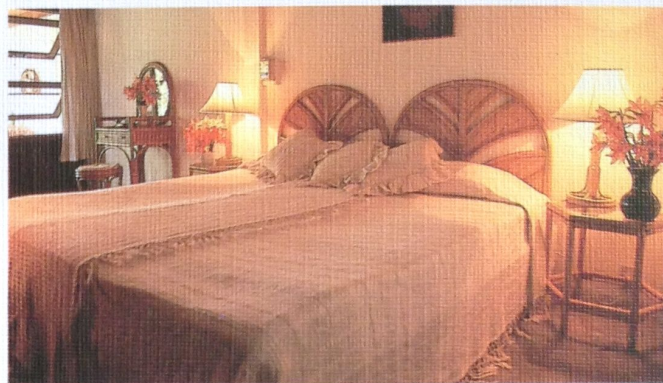
*1983-1993*



*Where each guest  
is a president*



Beautifully situated on Chaweng Beach, only 800 meters from The Village, The White House has 12 bungalows each with its own terrace. In addition to full dining amenities, facilities include the charming "Pavillion" tea house, set amid gardens and coconut palms, affording fine views of the sea. At The White House, every guest is treated with presidential hospitality.



*The  
White House*



