

# SAMSUI

The Princess Village  
The Village Resort  
The White House

Samui Office: Chawang Beach, P.O. Box 25, Koh Samui 84140, Suratthani, Thailand  
Tel & Fax: 07771 421882 Tlx: 07432 1400005 TH  
Bangkok Office: 299 Siem Reap, GPO Box 100, Bangkok 10501 Tel: 021 2940000



RESORT DESTINATION



*Traditional entertainment completes the Ayutthaya & Sukothai ambience.*

## Another Day in Paradise

Surround yourself with elegant rusticity in cosy cottages or step back in time and experience a stay in a genuinely old Ayutthayan style house.

*by Oliver Sanglang  
Photography by Chet Vimol*

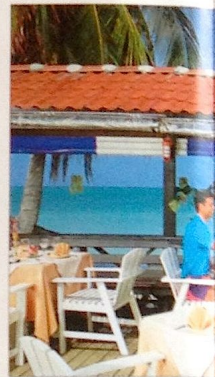
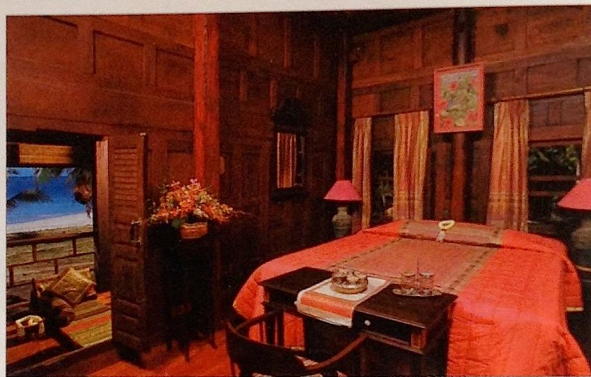
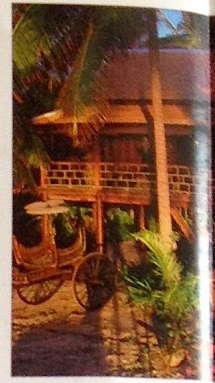
**H**idden amongst Samui's famous coconut trees, lush green foliage and colourful bougainvillea on Chaweng Beach, the Village is most travellers ideal of a perfect island retreat.

Opened four years ago, to complement its sister resort the White House, the accommodation is entirely suited to the surrounding unspoilt ambience. The nineteen individual cottages are furnished in a style of simple elegance with cool tiled floors, local rattan and pastel coloured cottons. Outside the abundance of foliage ensures complete privacy to lie and daydream on the large terrace.

Red bricked paths wind around the complex, while traditional klong jars floating with water lilies and hanging orchids add a touch of extra charm.

The pace is slow, relaxed and informal and the friendly Thai staff have all the time in the world for their guests, enjoying nothing more than the chance to chat and improve their English. The beach front Terrace is an idyllic place to partake of delicious Thai and international cuisine. Cooking is one of the owner's favourite hobbies and guests will not be disappointed. You can enjoy the cool ocean breeze as you sit and gaze out across the azure blue





*The Village, The Princess Village and The White House resorts have everything, from sumptuous cuisine, traditional entertainment and lush tropical ambience. To complete this picture of perfection, mere steps away lies stunning Chaweng Beach.*

sea where several luxury yachts usually drop anchor. In the evening, it is romantic candlelight dining beneath the stars. Cheeky mynah birds, so tame that they join guests at the table, add a diversion, while the only background music is the soft lapping of the waves.

A couple of steps down from the terrace lead right onto the beach where shade is provided beneath graceful swaying palm trees or thatched umbrellas. A few feet away lie warm, unpolluted waters in which to swim and snorkel. The Village's own speedboat is available for guests who would like to water ski, fish or take exploratory trips to the nearby islands.

Actually, it is difficult to decide whether to stay at The Village, or The White House a couple of kilometres down the road. The White House is similar to The Village in both charm and surroundings, with a total of 12 rooms that are more suited for families. The Moonlight Terrace Restaurant with its outstanding sea views is reminiscent of stepping into someone's private home, with lots of little personal touches such as a bookcase and a few antiques scattered around.

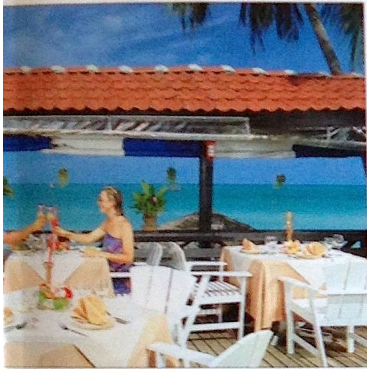
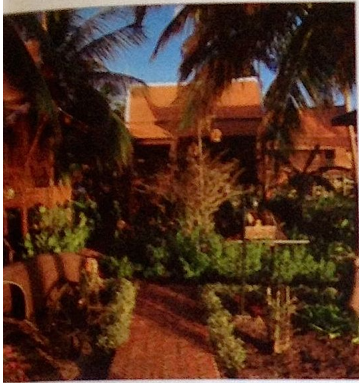
The mastermind behind both resorts is Khun Patcharee Smith, a refreshingly charming Thai architect who feels equally at ease chatting in French, German, English or Thai. Passionate about preserving the sur-

rounding environment and retaining that famous Koh Samui tranquility, Khun Patcharee's philosophy is to make guests feel entirely at home - as if they are visiting relatives. This is why she prefers to keep her resorts small and intimate, so she has the time to personally greet and chat with all her guests.

Deciding where to stay will become even more difficult when the new Princess Village adjoining The Village Resort is completed. A complex of 27 Thai style houses with a landscaped swimming pool, restaurant and bar are planned. This project will see the fulfillment of a personal ambition for Khun Patcharee, who is supervising every minute detail personally. Unlike other Thai style house resorts, the lovely, graceful buildings are genuinely old and have been transplanted from places such as Ayutthaya and painstakingly restored.

The interiors, with their high pointed ceilings and numerous small windows, are superbly furnished in traditional fabrics based on exquisite old style Ayutthayan and Sukothai designs. Soft pastel bedspreads and matching shades on stoneware lamps blend with the hue of the polished teak wood. Each house has an antique dressing table and special little extras such as a silver betel set, or a bronze lotus bowl. The bathroom carries on the traditional theme, but beside the klong jar that would have been the





only bathing amenity in an old house, there are full modern facilities. Cool sea breezes should be sufficiently refreshing but in case it gets too hot, there is also a discreet air conditioner tucked away against the wall.

Outside on the terrace there are comfortable Thai style cushions and low tables for romantically relaxing on. The ground floor courtyard of each house is paved with mosaic tiles and each possesses its own lily pond. Around the gardens, purple, orange, yellow and red flowers create a vibrant splash of vivid colours. Adding to the picturesque old style setting, ox carts are decoratively filled with colourful plants and coconuts.

The first houses are now ready for occupation and anyone fortunate enough to savour their beauty and atmosphere will never want to leave, as the spell of Koh Samui weaves its gentle eternal magic.

To ensure a speedy and comfortable journey from the big city, Bangkok Airways offers six flights daily from Bangkok to Koh Samui, enabling visitors to maximise their time on this lovely island.

