

*Ban Kaeu*  
VILLAS



**Ayutthaya Thai Villas**  
SALE

2/17 Moo 1, Tambon Bophut  
Fisherman's Village, Bophut  
Koh Samui 84320 - Suratthani

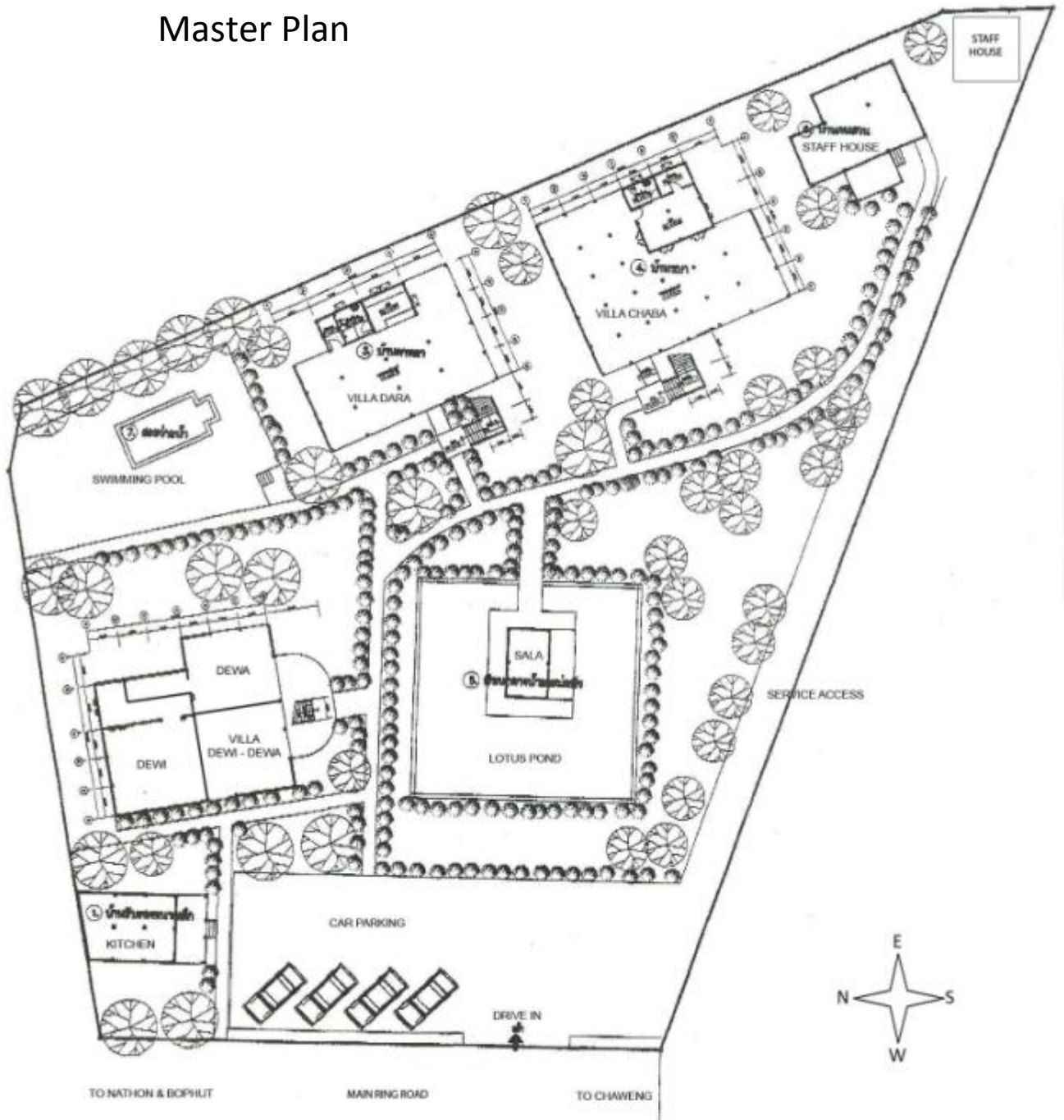
# Fact Sheet

- Location:** Samui Ring Road, 2/17 Moo 1, Tambol Bophut, Fisherman's Village, Koh Samui 84320, Suratthani
- Bophut:** A picturesque Village on the north east of Koh Samui is still relatively of an island character, this spot's charm shines in the evening, when a peaceful visitor may enjoy a fine meal at one of the various waterfront restaurants. Ample choice for shopping is featured along the coastal road, lending the town an old-world charm.
- Buildings:** Ban Kaew Villas, a small village composed by three individual Ayutthaya Thai style Villas amidst a vast garden located directly on the Koh Samui main ring road.
- Beach** Bophut Beach @ 500m walking distance (10 minutes)
- Pool** Swimming pool with jet stream, Deck Chairs and Umbrellas
- Build** January 2000 and refurbished in 2015
- Purpose:** Suitable for commercial use, Thai Show Village with handicraft production, Shops, Thai Art Museum, Thai cooking classes, Restaurant, Wedding Events
- Land :** Area 2 Rai 1 Ngan 76 Sq.Wah (3200+400+304 sq.m)  
Land Title Deed "Chanote"  
Total Land area 3904 sq.m.  
Property Free Hold
- Sale Price:** On Request
- Contact:** For further info contact  
Khun Thomas 081 894 2215  
Line ID 0818942215  
th.andereggen@gmail.com  
www.TPSasset.com





# Master Plan



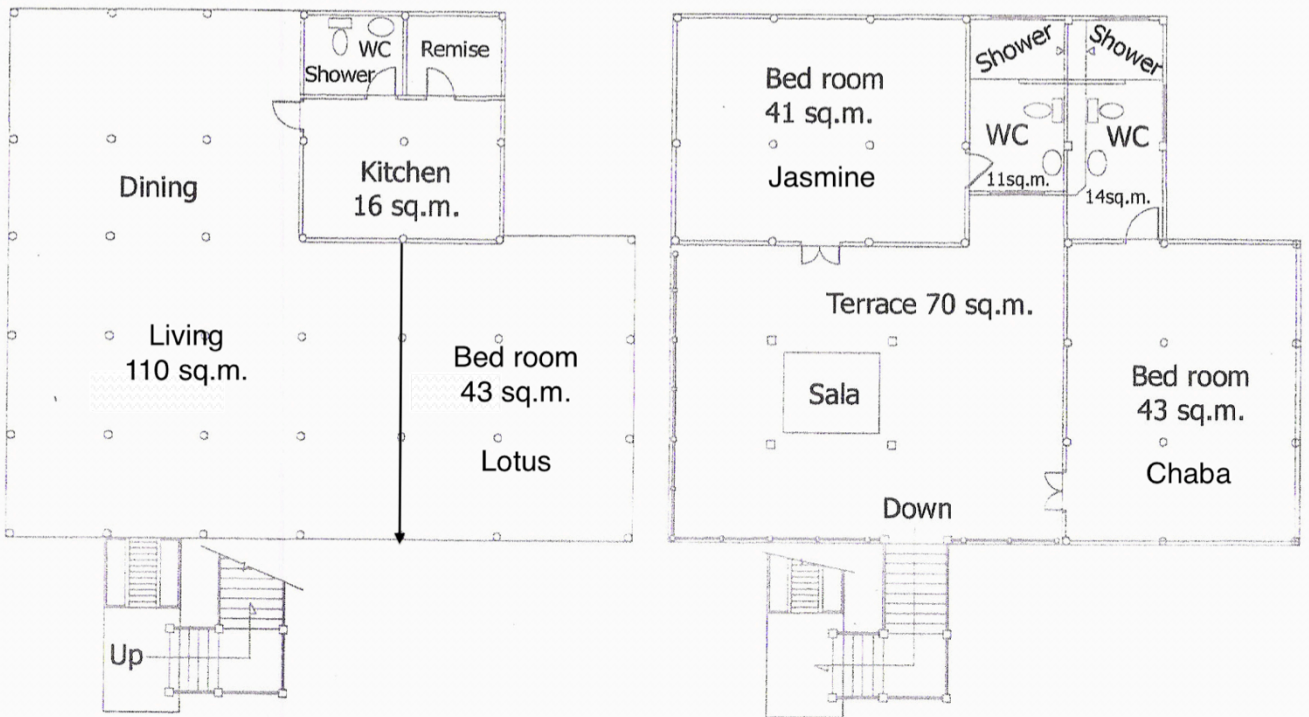
# Villa "Chaba"

Two large Ayutthaya Thai style Villas connected to each other by a large terrace & Thai Sala on the upper 1<sup>st</sup> floor. Ground Fl. has open-air living & dining area, a covered kitchen and the 3<sup>rd</sup> bed room. This villa features 3 bath rooms. Ideal lay-out converting the villa into commercial use.



# Villa "Chaba"

370 sqm

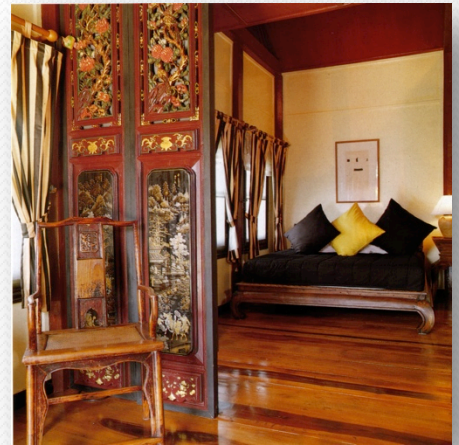


GROUND FLOOR  
180 sqm

1st FLOOR  
180 sqm

# Villa "Dara"

Two Ayutthaya Thai houses build together offering a very large living space under the same roof on the upper floor with a large terrace & Thai Sala. Open air living & dining area and kitchen on the ground floor. Ideal lay-out converting the villa into commercial use.





# Villa Dara

270 sqm



**GROUND FLOOR**  
135 sqm



**1st FLOOR**  
135 sqm

# Villa Dewi - Dewa

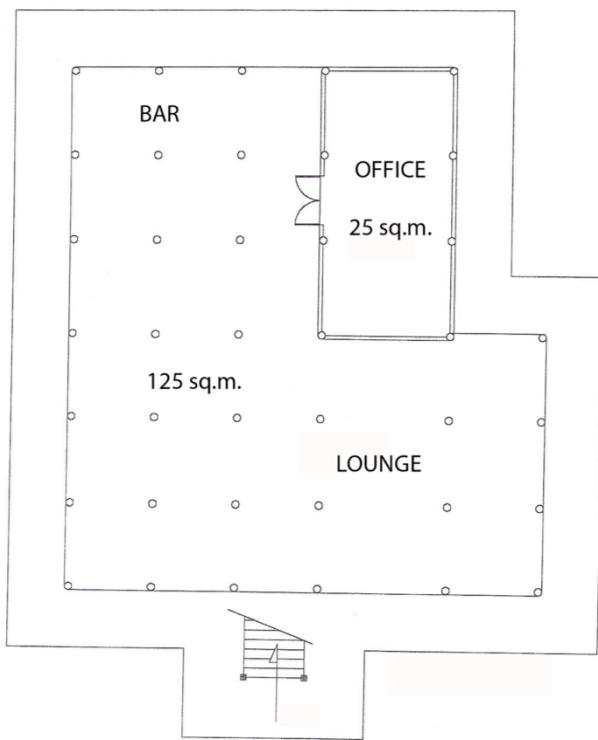
Two rooms sharing a large terrace & Thai Sala on the upper floor. Public area with lounge and bar on the ground floor, ideal for restaurant, commercial shop or office. Adjacent is a fully equipped commercial kitchen.



# Villa Dewi - Dewa

300 sqm

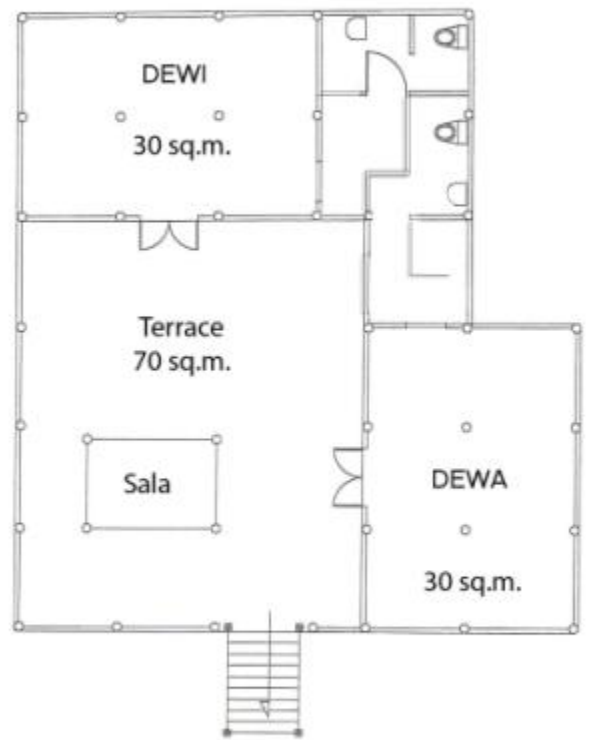
## RESTAURANT



GROUND FLOOR

**GROUND FLOOR**  
150 sqm

## VILLA DEWI - DEWA



**UPPER FLOOR PLAN**  
150 sqm

